

Self-evaluation Summary Dashboard

Produce custom dashboards
at fftaspire.org

Battle Primary Academy

LA Reading DFE 8702011 Produced September 2020

Reports

- Overview
- Attainment & Progress
- Pupil groups
- Subjects
- Disadvantaged pupils
- Scatterplot
- Context

What it tells you

- What are the strengths and weaknesses of your school?
- How does attainment and pupil progress at your school compare to the national average?
- How are you performing in different subjects?
- Do you have any under-performing groups of pupils?

About the data shown



Filters

No filters chosen (all pupils included)

You can use filters to view a subset of pupils



Indicators

% Expected Standard + (Re, Wr, Ma)

% Higher Standard (Re, Wr, Ma)

2020 self-evaluation reports have been calculated using the teacher assessments provided by schools as part of the FFT Results Service. ?

Battle Primary Academy

2020 KS1

Overview

KS1 Attainment 2020 - Actual results

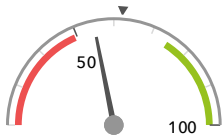
60 pupils

% Expected Standard + (Re, Wr, Ma)

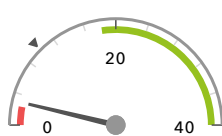
% Higher Standard (Re, Wr, Ma)

55%

3%



In line with the national average (62%) ◀



In line with the national average (10%) ◀

KS1 Progress 2020 - Value Added

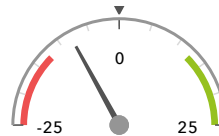
58 matched pupils

% Expected Standard + (Re, Wr, Ma)

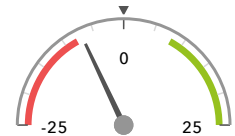
% Higher Standard (Re, Wr, Ma)

-8%

-7%



In line with the national average (0%) ◀



In line with the national average (0%) ◀

KS1 higher and lower performing pupil groups 2020

Minimum group size: 5

| | Higher performing | Lower performing |
|--|---|--|
| Overall achievement pupil progress | SEN Support (5) | Pakistani (5) FSM (in last 6 years) (13) - FSM (11) |
| KS1 reading achievement pupil progress | | Pakistani (5) FSM (11) FSM (in last 6 years) (13) |
| KS1 writing achievement pupil progress | Any Other (7) SEN Support (5) | Pakistani (5) Middle attainers (23) FSM (11) |
| KS1 mathematics achievement pupil progress | SEN Support (5) Lower attainers (17) | Pakistani (5) Higher attainers (18) First language English (31) |

2020 self-evaluation reports have been calculated using the teacher assessments provided by schools as part of the FFT Results Service. ?

Battle Primary Academy

2020 KS1

Attainment & progress

KS1 Attainment 2020

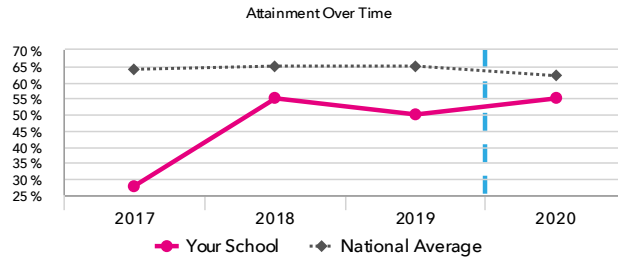
60 pupils

% Expected Standard + (Re, Wr, Ma)

55%



In line with the national average (62%)



KS1 Progress 2020

58 matched pupils

% Expected Standard + (Re, Wr, Ma)

-8%



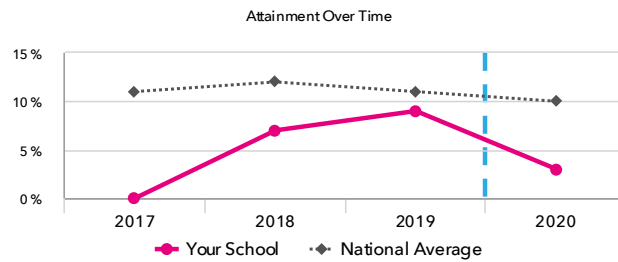
In line with the national average (0%)

% Higher Standard (Re, Wr, Ma)

-7%



In line with the national average (0%)



% Higher Standard (Re, Wr, Ma)

3%



In line with the national average (10%)

KS1 performance summary

| | Actual results | | | Pupil progress | | |
|------------------------------------|----------------|-------|------|----------------|--------|--------|
| | 2018 | 2019 | 2020 | 2018 | 2019 | 2020 |
| Number of Pupils / % Matched | 58 | 54 | 60 | 90% | 83% | 97% |
| % Expected Standard + (Re, Wr, Ma) | 55% ↑ | 50% ↓ | 55% | -6% ↑ | -18% ↓ | -8% |
| % Higher Standard (Re, Wr, Ma) | 7% | 9% | 3% | -7% | -8% | -7% |
| % Expected Standard + Reading | 66% ↑ | 61% ↓ | 62% | -3% ↑ | -14% ↓ | -13% ↓ |
| % Higher Standard Reading | 26% | 17% | 12% | -1% | -18% ↓ | -10% |
| % Expected Standard + Writing | 62% ↑ | 61% | 58% | -2% ↑ | -8% | -9% |
| % Higher Standard Writing | 12% | 15% | 5% | -6% | -7% | -8% |
| % Expected Standard + Maths | 66% ↑ | 63% ↓ | 72% | -5% ↑ | -14% ↓ | -3% |
| % Higher Standard Maths | 14% | 13% | 10% | -11% | -14% ↓ | -9% |

2020 self-evaluation reports have been calculated using the teacher assessments provided by schools as part of the FFT Results Service. ?

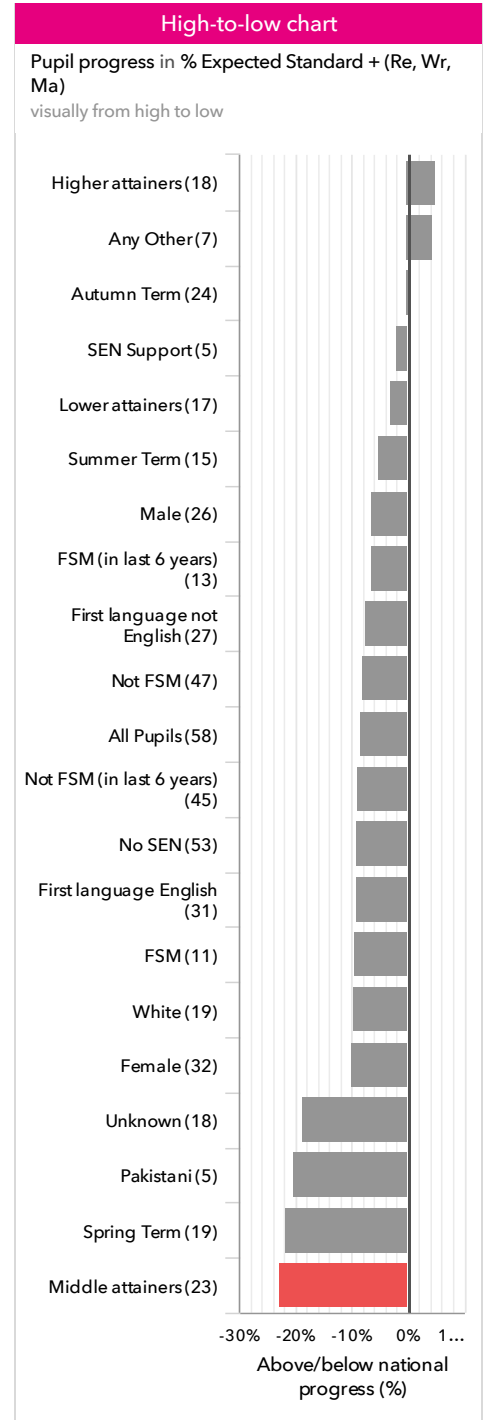
Battle Primary Academy

2020 KS1

Pupil groups

KS1 Pupil groups performance 2020

| | Pupils | Actual results | | Pupil progress | | |
|-------------------------|----------------------------|------------------------------------|--------------------------------------|------------------------------------|---------------------------------------|------|
| | | % Expected Standard + (Re, Wr, Ma) | % Higher Standard (Re, Wr, Ma) | % Expected Standard + (Re, Wr, Ma) | % Higher Standard (Re, Wr, Ma) | |
| Summary | All Pupils | 60 | 55% | 3% | -8% | -7% |
| Gender | Male | 28 | 50% | 4% | -6% | -7% |
| | Female | 32 | 59% | 3% | -10% | -7% |
| Prior Attainment | Higher attainers | 18 | 94% | 6% | +5% | -20% |
| | Middle attainers | 23 | 52% - | 4% | -23% - | -1% |
| | Lower attainers | 17 | 24% | 0% | -3% | -1% |
| Pupil Premium | FSM (in last 6 years) | 13 | 62% | 0% | -7% | -7% |
| | Not FSM (in last 6 years) | 47 | 53% | 4% | -9% | -7% |
| FSM | FSM | 11 | 55% | 0% | -10% | -5% |
| | Not FSM | 49 | 55% | 4% | -8% | -7% |
| Term of Birth | Summer Term | 17 | 41% | 0% | -5% | -4% |
| | Spring Term | 19 | 47% | 5% | -22% | -2% |
| | Autumn Term | 24 | 71% | 4% | +0% | -12% |
| SEN Group | SEN Support | 5 | 20% | 0% | -2% | -2% |
| | No SEN | 55 | 58% | 4% | -9% | -7% |
| EAL | First language not English | 29 | 45% | 0% | -8% | -7% |
| | First language English | 31 | 65% | 6% | -9% | -7% |
| Ethnicity | White | 19 | 53% | 0% | -10% | -5% |
| | Black Caribbean | 1 | 100% | 0% | +10% | -16% |
| | Black African | 5 | 80% | 0% | +14% | -26% |
| | Pakistani | 5 | 60% | 0% | -21% | -18% |
| | Other Asian | 4 | 75% | 0% | +10% | -20% |
| | Any Other | 8 | 50% | 13% | +4% | +7% |
| | Unknown | 18 | 44% | 6% | -19% | -4% |



2020 self-evaluation reports have been calculated using the teacher assessments provided by schools as part of the FFT Results Service. ?

Battle Primary Academy

2020 KS1

Subjects

KS1 subject performance 2020

| | Actual results | | | Pupil progress | | | Actual results over time | | |
|------------------------------|----------------|-------|------|----------------|--------|--------|--------------------------|--|--|
| | 2018 | 2019 | 2020 | 2018 | 2019 | 2020 | | | |
| Number of Pupils / % Matched | 58 | 54 | 60 | 90% | 83% | 97% | | | |
| Reading | | | | | | | | | |
| % Expected Standard + | 66% ↑ | 61% ↓ | 62% | -3% ↑ | -14% ↓ | -13% ↓ | | | |
| % Higher Standard | 26% | 17% | 12% | -1% | -18% ↓ | -10% | | | |
| Writing | | | | | | | | | |
| % Expected Standard + | 62% ↑ | 61% | 58% | -2% ↑ | -8% | -9% | | | |
| % Higher Standard | 12% | 15% | 5% | -6% | -7% | -8% | | | |
| Maths | | | | | | | | | |
| % Expected Standard + | 66% ↑ | 63% ↓ | 72% | -5% ↑ | -14% ↓ | -3% | | | |
| % Higher Standard | 14% | 13% | 10% | -11% | -14% ↓ | -9% | | | |
| Science | | | | | | | | | |
| % Expected Standard + | 88% ↑ | 67% ↓ | - | - | - | - | | | |
| | | | | | | | | | |

2020 self-evaluation reports have been calculated using the teacher assessments provided by schools as part of the FFT Results Service. ?

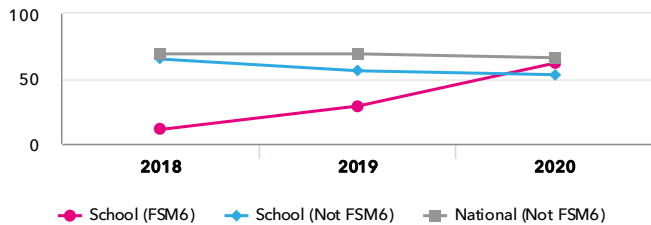
Battle Primary Academy

2020 KS1

Disadvantaged pupils

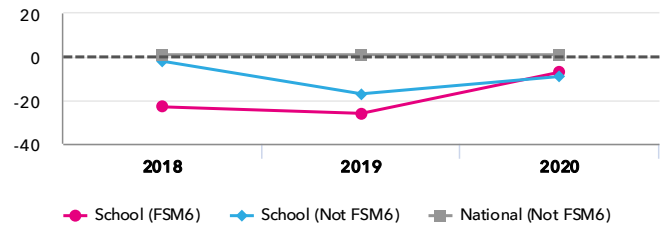
KS1 attainment for disadvantaged pupils 2020

% Expected Standard + (Re, Wr, Ma)

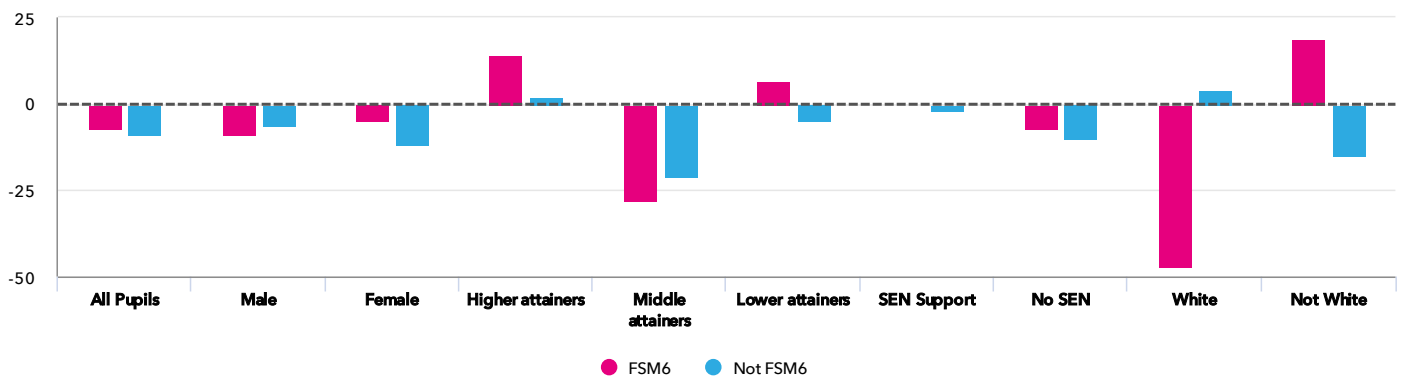


KS1 progress for disadvantaged pupils 2020

% Expected Standard + (Re, Wr, Ma)



Progress gap % Expected Standard + (Re, Wr, Ma)



Attainment & progress

| Pupils | | Attainment | | | | | Progress | | |
|-------------------------|------------------|------------|----------|------------------------------------|----------|------|----------|----------|------|
| | | FSM6 | Not FSM6 | % Expected Standard + (Re, Wr, Ma) | | | FSM6 | Not FSM6 | Gap |
| | | | | FSM6 | Not FSM6 | Gap | | | |
| Summary | All Pupils | 13 | 47 | 62% | 53% | 9% | -7% | -9% | 2% |
| Gender | Male | 4 | 24 | 75% | 46% | 29% | -9% | -6% | -3% |
| | Female | 9 | 23 | 56% | 61% | -5% | -5% | -12% | 7% |
| Prior Attainment | Higher attainers | 4 | 14 | 100% | 93% | 7% | 14% | 2% | 12% |
| | Middle attainers | 6 | 17 | 50% | 53% | -3% | -28% | -21% | -7% |
| | Lower attainers | 3 | 14 | 33% | 21% | 12% | 7% | -5% | 12% |
| SEN Group | SEN Support | - | 5 | - | 20% | - | - | -2% | - |
| | No SEN | 13 | 42 | 62% | 57% | 5% | -7% | -10% | 3% |
| Ethnic Group | White | 5 | 14 | 20% | 64% | -44% | -47% | 4% | -51% |
| | Not White | 8 | 33 | 88% | 48% | 40% | 19% | -15% | 34% |

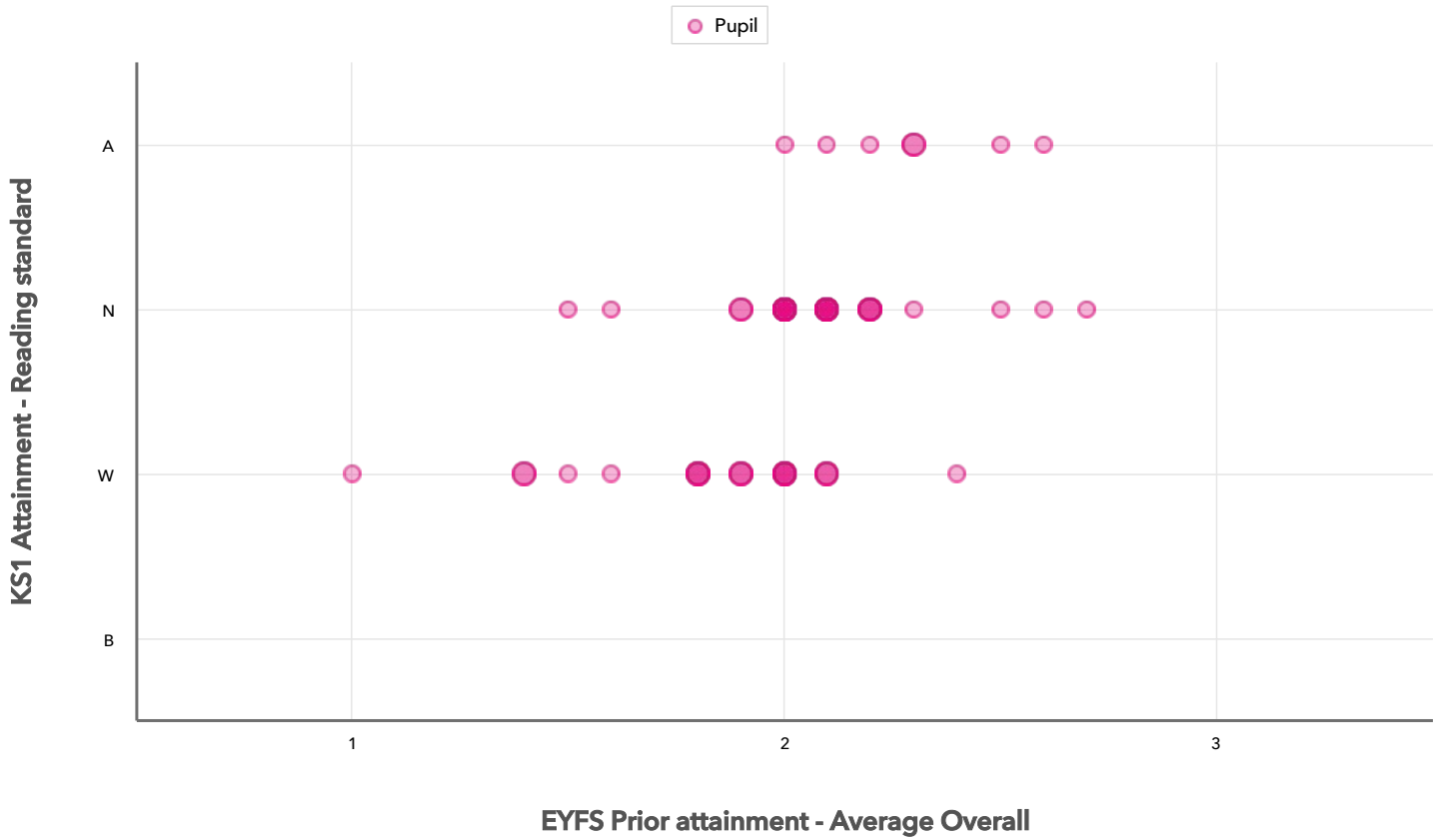
2020 self-evaluation reports have been calculated using the teacher assessments provided by schools as part of the FFT Results Service. ?

Battle Primary Academy

2020 KS1

Scatterplot

KS1 Pupil scatterplot 2020 60 pupils highlighted by All pupils ▾



Context data has been produced using either the data supplied by schools as part of the FFT 2020 Results Service or from the latest census data provided by the DfE. [?](#)

Battle Primary Academy

2020

KS1

Context

Context · Year 2

| | | Pupils | Comparative profile 2019 / 2020 | | Absence during Key Stage 1 | | Persistent absence during Key Stage 1 | |
|-------------------------|----------------------------|--------|------------------------------------|----------|-------------------------------|----------|--|----------|
| | | School | School | National | School | National | School | National |
| Summary | All Pupils | 60 | 100% | 100% | - | - | - | - |
| Gender | Male | 28 | 47% | 51% | - | - | - | - |
| | Female | 32 | 53% | 49% | - | - | - | - |
| Prior Attainment | Higher attainers | 18 | 30% | 33% | - | - | - | - |
| | Middle attainers | 23 | 38% | 35% | - | - | - | - |
| | Lower attainers | 17 | 28% | 28% | - | - | - | - |
| Pupil Premium | FSM (in last 6 years) | 13 | 22% | 24% | - | - | - | - |
| | Not FSM (in last 6 years) | 47 | 78% | 76% | - | - | - | - |
| FSM | FSM | 11 | 18% | 22% | - | - | - | - |
| | Not FSM | 49 | 82% | 77% | - | - | - | - |
| Term of Birth | Summer Term | 17 | 28% | 34% | - | - | - | - |
| | Spring Term | 19 | 32% | 32% | - | - | - | - |
| | Autumn Term | 24 | 40% | 34% | - | - | - | - |
| SEN Group | SEN Support | 5 | 8% | 13% | - | - | - | - |
| | No SEN | 55 | 92% | 85% | - | - | - | - |
| EAL | First language not English | 29 | 48% | 25% | - | - | - | - |
| | First language English | 31 | 52% | 74% | - | - | - | - |
| Ethnicity | White | 19 | 32% | 67% | - | - | - | - |
| | Black Caribbean | 1 | 2% | 3% | - | - | - | - |
| | Black African | 5 | 8% | 6% | - | - | - | - |
| | Pakistani | 5 | 8% | 6% | - | - | - | - |
| | Other Asian | 4 | 7% | 4% | - | - | - | - |
| | Any Other | 8 | 13% | 5% | - | - | - | - |
| | Unknown | 18 | 30% | 3% | - | - | - | - |