

# Book Knowledge Organiser – Letters from the Lighthouse

## Important information

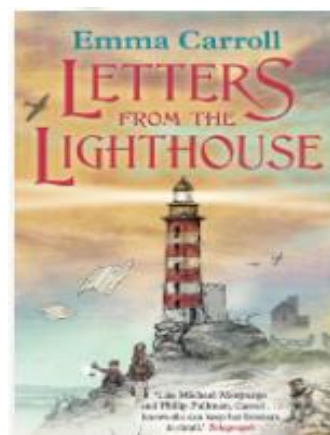
**Plot** After months of bombing raids in London, twelve-year-old Olive Bradshaw and her little brother Cliff are evacuated to the Devon coast. Olive becomes the local lighthouse keeper's post-girl, carrying secret messages (as she likes to think of the letters) to the villagers. However, Olive has a secret of her own. Her older sister Sukie went missing in an air raid, and she's desperate to discover what happened to her. She finds a strange, coded note which seems to link Sukie to Devon, and to something dark and impossibly dangerous.

**Themes** Determination, Courage Vs Fear, Loss, Survival, Friendship and Acceptance.

**Setting** The book is initially set in the city of London in 1941, during WWII. However, after frequent air raids, Olive and Cliff are sent as evacuees to the fictional village of Budmouth Point on the Devonshire coastline with Queenie. Before long, they find themselves staying in the local lighthouse with the local lighthouse keeper and his dog.

## Characters

Olive Bradshaw	Thirteen-year-old girl who is evacuated from London to Devon.
Sukie Bradshaw	Olive's older sister who suddenly goes missing one day.
Cliff Bradshaw	Younger brother of Olive who is also evacuated to Devon.
Gloria	Olive's kind next door neighbour who organises their evacuation.
Queenie	Gloria's sister who the children initially stay with.
Rachel (Mum)	Olive, Sukie and Cliff's mother who wants to keep them safe.
Nurse Spencer	Nurse who looks after Olive in St. Leonard's Hospital.
Mr Barrowman	Teacher who escorts the children to Devon and teaches them there.
Esther Jenkins	A girl who Olive and Cliff do not seem to get on well with.
Mrs Henderson	Local resident of Budmouth Point who helps organise the evacuees.
Miss Carter	Local resident of Budmouth Point who helps organise the evacuees.
Ephraim Pengilly	The lighthouse keeper with whom the children move in with.
Pixie	Ephraim's dog who the children bond with and save from danger.
Mr Spratt	Navy coastguard who wants the lighthouse painted black.
Mrs Wilcox	Farmer's wife who is one of the first on the scene to a downed plane.
Refugees	People who are forced to leave their country to safety.



**Name of Book:** Letter from the Lighthouse

**Date Published:** 2017

**Author:** Emma Carroll

**Genre:** Historical Fiction

## Key vocabulary

dithering	hesitate because they are unable to make a quick decision
dismal	sad and depressing, especially in appearance
evacuating	send someone to a place of safety, away from danger
bombarding	attack with continuous heavy gunfire or bombs
overwhelming	being affected by something so much you cannot deal with it
hollered	yell call, cry or to shout very loudly
ravenous	someone who is starved, very hungry, famished
bewildering	very confusing and difficult to understand
precariously	not in complete control of events; uncertain/tricky
queasy	to feel rather ill, as if you are going to be sick
exasperated	frustrated/angry because of something that is happening
ominous	the thought that something unpleasant will happen
seize	take hold of something quickly, firmly, and forcefully
hysterical	a state of uncontrolled excitement, anger, or panic
refugee	people forced to leave their country due to war or because of their political or religious beliefs
persecuting	treated cruelly/unfairly because of their race or beliefs
smuggle	to illegally take things in or out of a place
telegram	message that is sent electronically and then printed
fascism	opposed to democracy and prejudiced towards a subject

## Context

World War II began in 1939, when Germany invaded Poland. Britain and France then declared war officially on 3rd September. after Hitler had refused to abort his invasion. The Blitz was a German bombing campaign against the United Kingdom in 1940 and 1941, during the Second World War. The term was first used by the British press and originated from the term Blitzkrieg, the German word for 'lightning war'. It was this that meant many children were evacuated for safety out of large cities to the countryside to stay with people they did not know. Some experiences that yhe children had were good, others were not. The lights on many lighthouses were extinguished during the Second World War, but not all lights were extinguished outright. Many lighthouses on enemy flight paths were painted with camouflage paint. Many Keepers on Lighthouses lost their lives and are commemorated on a memorial in Trinity Square in London.