

# 2023 KS1 School Dashboard

for governors & school leaders

Produce custom dashboards  
at [fftaspire.org](https://fftaspire.org)

## Battle Primary Academy

LA Reading DFE 8702011 Produced November 2023 Version 1

### What it is

Seven easy-to-use reports that help governors and school leaders to evaluate school performance using the latest 2023 school performance indicators.

### What it tells you

What are the strengths, areas for improvement and under-performing groups of pupils

How does attainment and pupil progress compare to the national average this academic year?

How are you performing in different subjects?

How might the context of your school affect performance?

### About the data shown

1 2 3

#### Actual results

Actual results for your school, using a range of measures such as averages and thresholds.



#### Gauges

These display headline indicators and whether actual results and pupils' progress are in line with, or significantly above or below, the national average.

ESTIMATED

1 2 3

#### Pupil progress

The value added progress that your pupils have made from one key stage to the next. FFT compares your actual results to the estimated results based on the progress of similar pupils nationally.



#### Statistical significance

Green plus signs and red minus signs highlight where either actual results or pupils' progress is significantly above or below the national average.



#### Trends

The dashboard analyses school performance over 3-5 years. Any significant year-on-year improvement is highlighted using an up arrow. Significant declines in performance are highlighted with a down arrow.



#### Strengths & weaknesses

These highlight key pupil groups and subjects where progress is above or below the national average.

### Working in partnership with



### Data sources

Generated from FFT Aspire which includes data sourced from the DfE (National Pupil Database) and data calculated by FFT. FFT is accredited as a DfE supplier to receive early access to ASP data. Headline performance indicators will be consistent with the DfE School Performance Tables and ASP.

2023 Value Added has only been calculated for pupils who we received EYFSP data as part of the 2021 FFT Results Service

Battle Primary Academy

2023 KS1 VA

## Overview

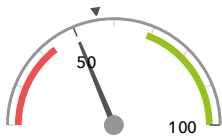
### KS1 Attainment 2023 · Actual results

60 pupils

% Expected Standard + (Re, Wr, Ma)

% Higher Standard (Re, Wr, Ma)

50%



In line with the national average (56%) ◀

10%



In line with the national average (6%) ◀

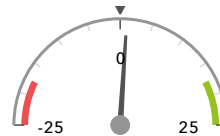
### KS1 Progress 2023 · Value Added

27 matched pupils

% Expected Standard + (Re, Wr, Ma)

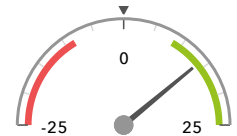
% Higher Standard (Re, Wr, Ma)

+1%



In line with the national average (0%) ◀

+14%+



Significantly above the national average (0%) ◀

### KS1 higher and lower performing pupil groups 2023

Minimum group size: 5

	Higher performing	Lower performing
<b>Overall achievement</b> pupil progress	Spring Term (5) First language not English (10) ↑ White (5)	Summer Term (8) Unknown (13)
<b>KS1 reading achievement</b> pupil progress	White (5) Autumn Term (14) Female (16)	Unknown (13) Summer Term (8)
<b>KS1 writing achievement</b> pupil progress	Spring Term (5) First language not English (10) FSM (6)	White (5)
<b>KS1 mathematics achievement</b> pupil progress	First language not English (10) White (5) Spring Term (5)	Summer Term (8) FSM (6) FSM (in last 6 years) (6)

### Census information

KS1's latest academic year uses the Spring 2023 DfE census – [learn more](#) · [See recent Aspire updates](#)

2023 Value Added has only been calculated for pupils who we received EYFSP data as part of the 2021 FFT Results Service

Battle Primary Academy

2023 KS1 VA

# Attainment & progress

## KS1 Attainment 2023

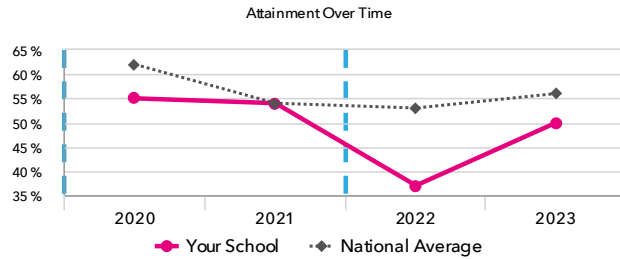
60 pupils

% Expected Standard + (Re, Wr, Ma)

50%



In line with the national average (56%)

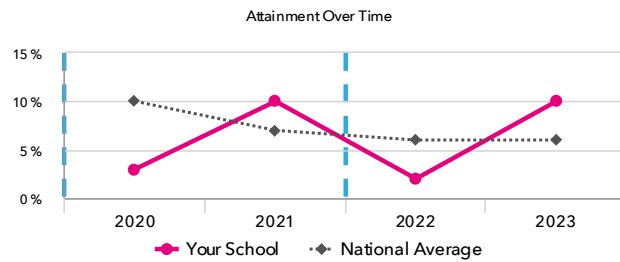


% Higher Standard (Re, Wr, Ma)

10%



In line with the national average (6%)



## KS1 Progress 2023

27 matched pupils

% Expected Standard + (Re, Wr, Ma)

+1%



In line with the national average (0%)

% Higher Standard (Re, Wr, Ma)

+14%+



Significantly above the national average (0%)

## KS1 performance summary

	Actual results			Pupil progress		
	2021	2022	2023	2021	2022	2023
Number of Pupils / % Matched	52	60	60	88%	87%	45%
% Expected Standard + (Re, Wr, Ma)	54%	37% -	50%	+4%	-18% -	+1%
% Higher Standard (Re, Wr, Ma)	10%	2%	10%	+5%	-3%	+14% +
% Expected Standard + Reading	63%	63%	67%	+1%	-8%	+0%
% Higher Standard Reading	27%	13%	23%	+11%	-1%	+18% +
% Expected Standard + Writing	62%	40% -	53%	+8%	-19% -	+0%
% Higher Standard Writing	29% +	3%	10%	+22% +	-4%	+11% +
% Expected Standard + Maths	65%	65%	58% -	-0%	-7%	-8%
% Higher Standard Maths	21%	13%	17%	+6%	-2%	+18% +

## Census information

KS1's latest academic year uses the Spring 2023 DfE census – [learn more](#) · [See recent Aspire updates](#)

2023 Value Added has only been calculated for pupils who we received EYFSP data as part of the 2021 FFT Results Service

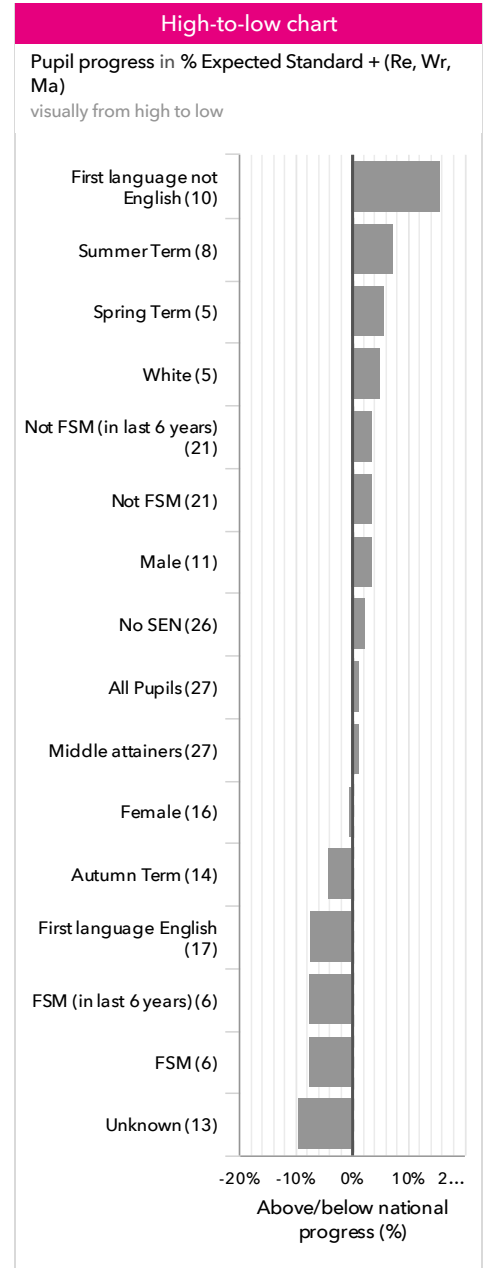
Battle Primary Academy

2023 KS1 VA

# Pupil groups

## KS1 Pupil groups performance 2023

	Pupils	Actual results		Pupil progress		
		% Expected Standard + (Re, Wr, Ma)	% Higher Standard (Re, Wr, Ma)	% Expected Standard + (Re, Wr, Ma)	% Higher Standard (Re, Wr, Ma)	
<b>Summary</b>	All Pupils	60	50%	10%	+1%	+14%+
<b>Gender</b>	Male	26	46%	8%	+4%	+14%+
	Female	34	53%	12%	-0%	+14%+
<b>Prior Attainment</b>	Middle attainers	28	71% ↑	18%+	+1% ↑	+14%+
<b>Pupil Premium</b>	FSM (in last 6 years)	14	29%	7%	-7%	+12%
	Not FSM (in last 6 years)	46	57% ↑	11%	+4% ↑	+14%+
<b>FSM</b>	FSM	14	29%	7%	-7%	+12%
	Not FSM	46	57% ↑	11%	+4% ↑	+14%+
<b>Term of Birth</b>	Summer Term	21	52%	0%	+7%	-4%
	Spring Term	16	44%	13%	+6%	+35%+
	Autumn Term	23	52%	17%	-4%	+16%+
<b>SEN Group</b>	SEN Support	6	0%	0%	-32%	-0%
	No SEN	54	56%	11%	+3%	+14%+
<b>EAL</b>	First language not English	25	56% ↑	8%	+16%	+5%
	First language English	35	46%	11%	-7%	+19%+
<b>Ethnicity</b>	White	14	43%	0%	+5%	-5%
	Black Caribbean	1	100%	100%	+24%	+95%
	Black African	2	50%	0%	-	-
	Indian	2	50%	50%	-	-
	Pakistani	5	80%	0%	+25%	-5%
	Bangladeshi	1	0%	0%	-74%	-5%
	Other Asian	5	100%	20%	+26%	+29%
	Any Other	3	67%	0%	+27%	-5%
	Unknown	27	37%	11%	-9%	+18%+



### Census information

KS1's latest academic year uses the Spring 2023 DfE census – [learn more](#) · [See recent Aspire updates](#)

2023 Value Added has only been calculated for pupils who we received EYFSP data as part of the 2021 FFT Results Service

Battle Primary Academy

2023 KS1 VA

# Subjects

## KS1 subject performance 2023

	Actual results			Pupil progress			Actual results over time
	2021	2022	2023	2021	2022	2023	
Number of Pupils / % Matched	52	60	60	88%	87%	45%	
<b>Reading</b>							
% Expected Standard +	63%	63%	67%	+1%	-8%	+0%	<b>% Expected Standard + Reading</b> 
% Higher Standard	27%	13%	23%	+11%	-1%	+18% <span style="color: green;">+</span>	
<b>Writing</b>							
% Expected Standard +	62%	40% <span style="color: red;">-</span>	53%	+8%	-19% <span style="color: red;">-</span>	+0%	<b>% Expected Standard + Writing</b> 
% Higher Standard	29% <span style="color: green;">+</span>	3%	10%	+22% <span style="color: green;">+</span>	-4%	+11% <span style="color: green;">+</span>	
<b>Maths</b>							
% Expected Standard +	65%	65%	58% <span style="color: red;">-</span>	-0%	-7%	-8%	<b>% Expected Standard + Maths</b> 
% Higher Standard	21%	13%	17%	+6%	-2%	+18% <span style="color: green;">+</span>	
<b>Science</b>							
% Expected Standard +	-	65% <span style="color: red;">-</span>	85% <span style="color: green;">↑</span>	-	-	-	<b>% Expected Standard + Science</b> 

**Census information**

KS1's latest academic year uses the Spring 2023 DfE census – [learn more](#) · [See recent Aspire updates](#)

2023 Value Added has only been calculated for pupils who we received EYFSP data as part of the 2021 FFT Results Service

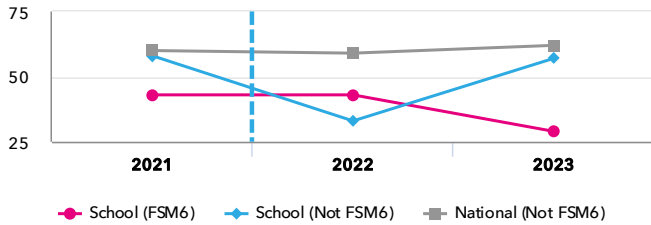
Battle Primary Academy

2023 KS1 VA

# Disadvantaged pupils

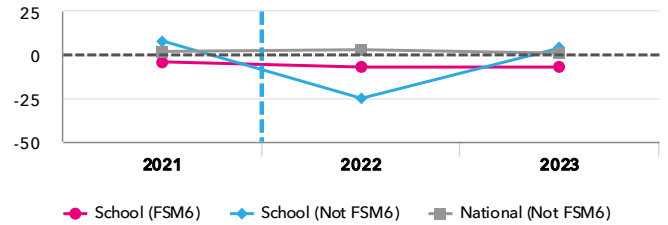
## KS1 attainment for disadvantaged pupils 2023

% Expected Standard + (Re, Wr, Ma)

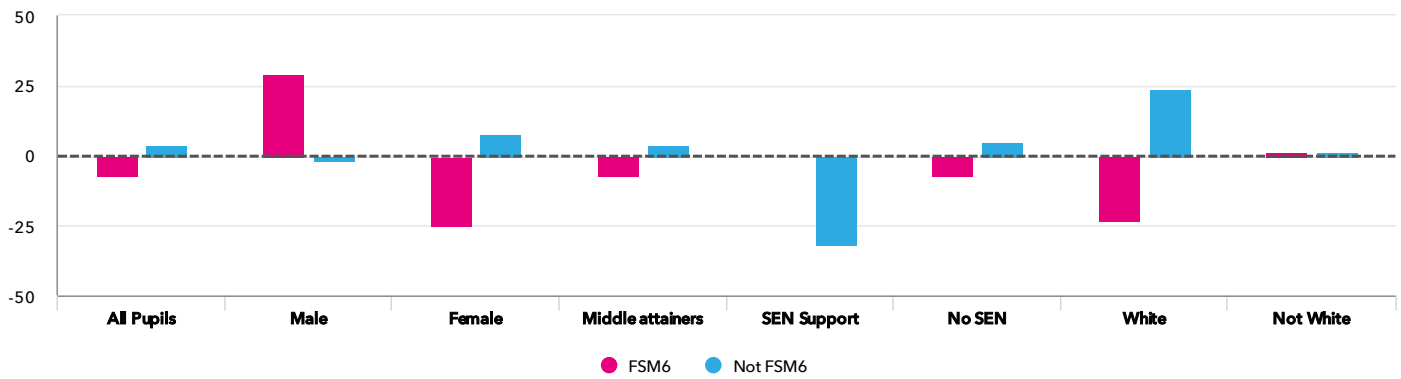


## KS1 progress for disadvantaged pupils 2023

% Expected Standard + (Re, Wr, Ma)



## Progress gap % Expected Standard + (Re, Wr, Ma)



## Attainment & progress

Pupils	Attainment			Progress					
	% Expected Standard + (Re, Wr, Ma)			% Expected Standard + (Re, Wr, Ma)					
	FSM6	Not FSM6	Gap	FSM6	Not FSM6	Gap			
<b>Summary</b>	All Pupils	14	46	29%	57%	↑ -28%	-7%	4%	↑ -11%
<b>Gender</b>	Male	6	20	33%	50%	-17%	29%	-2%	31%
	Female	8	26	25%	62%	-37%	-25%	8%	-33%
<b>Prior Attainment</b>	Middle attainers	7	21	57%	76%	-19%	-7%	4%	-11%
<b>SEN Group</b>	SEN Support	2	4	0%	0%	0%	-	-32%	-
	No SEN	12	42	33%	62%	-29%	-7%	5%	-12%
<b>Ethnic Group</b>	White	6	8	17%	63%	-46%	-23%	24%	-47%
	Not White	8	38	38%	55%	-17%	1%	0%	1%

### Census information

KS1's latest academic year uses the Spring 2023 DfE census – [learn more](#) · [See recent Aspire updates](#)

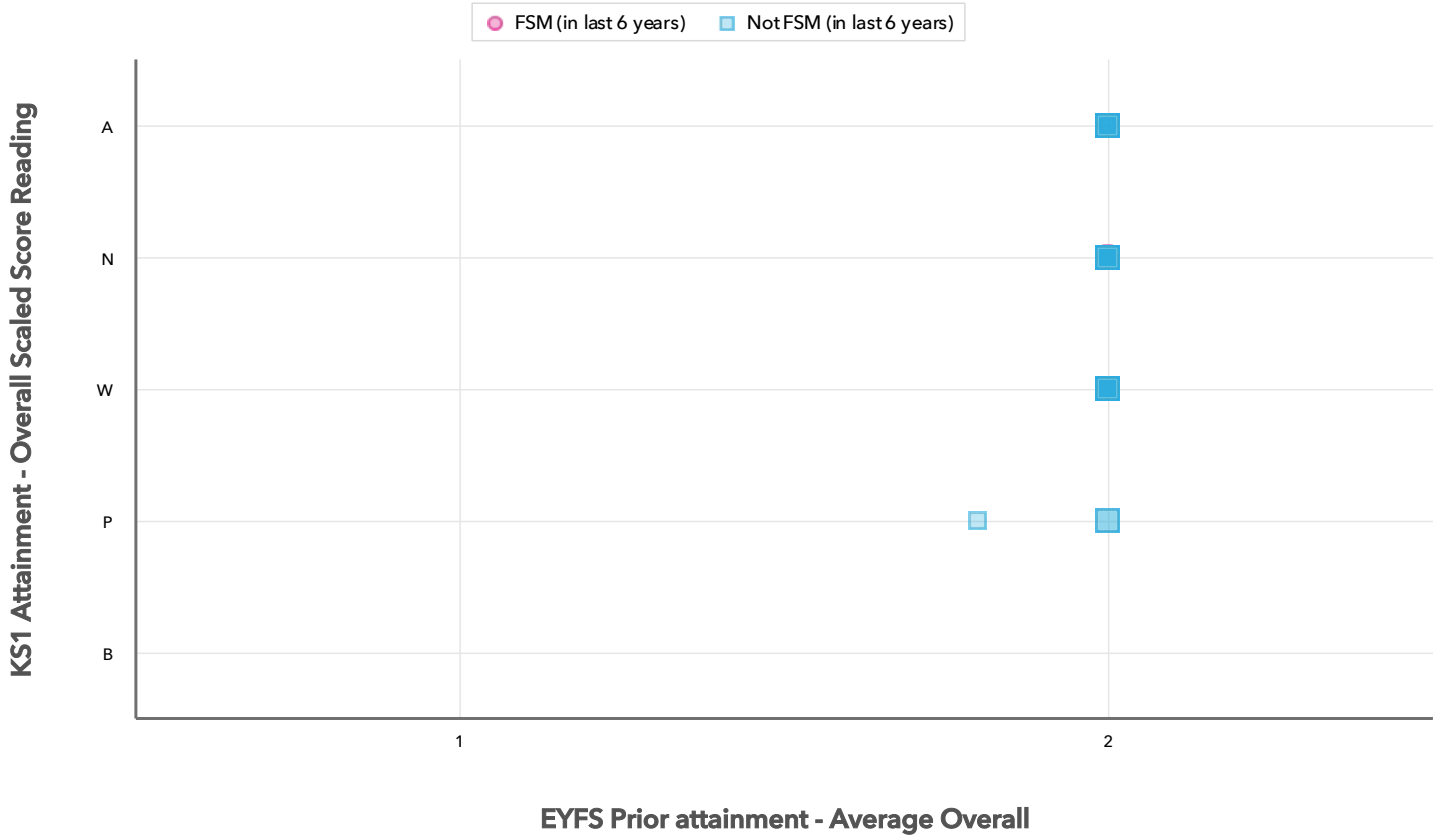
2023 Value Added has only been calculated for pupils who we received EYFSP data as part of the 2021 FFT Results Service

Battle Primary Academy

2023 KS1 VA

# Scatterplot

KS1 Pupil scatterplot 2023 60 pupils highlighted by Pupil Premium



### Census information

KS1's latest academic year uses the Spring 2023 DfE census – [learn more](#) · [See recent Aspire updates](#)

## Context

## Context · Year 2

		Pupils	Comparative profile 2022 / 2023		Absence during Key Stage 1		Persistent absence during Key Stage 1	
		School	School	National	School	National	School	National
<b>Summary</b>	All Pupils	59	100%	100%	-	-	-	-
<b>Gender</b>	Male	25	42%	51%	-	-	-	-
	Female	34	58%	49%	-	-	-	-
<b>Prior Attainment</b>	Middle attainers	28	47%	4%	-	-	-	-
<b>Pupil Premium</b>	FSM (in last 6 years)	14	24%	25%	-	-	-	-
	Not FSM (in last 6 years)	45	76%	75%	-	-	-	-
<b>FSM</b>	FSM	14	24%	25%	-	-	-	-
	Not FSM	45	76%	75%	-	-	-	-
<b>Term of Birth</b>	Summer Term	21	36%	34%	-	-	-	-
	Spring Term	16	27%	32%	-	-	-	-
	Autumn Term	22	37%	34%	-	-	-	-
<b>SEN Group</b>	SEN Support	6	10%	13%	-	-	-	-
	No SEN	53	90%	83%	-	-	-	-
<b>EAL</b>	First language not English	25	42%	21%	-	-	-	-
	First language English	34	58%	79%	-	-	-	-
<b>Ethnicity</b>	White	14	24%	72%	-	-	-	-
	Black Caribbean	1	2%	2%	-	-	-	-
	Black African	1	2%	5%	-	-	-	-
	Indian	2	3%	4%	-	-	-	-
	Pakistani	5	8%	4%	-	-	-	-
	Bangladeshi	1	2%	2%	-	-	-	-
	Other Asian	5	8%	4%	-	-	-	-
	Any Other	3	5%	5%	-	-	-	-
Unknown	27	46%	1%	-	-	-	-	

## Census information

KS1's latest academic year uses the Spring 2023 DfE census – [learn more](#) · [See recent Aspire updates](#)