

# 2023 KS2 School Dashboard

for governors & school leaders

Produce custom dashboards  
at [fftaspire.org](https://fftaspire.org)

## Battle Primary Academy

LA Reading DFE 8702011 Produced October 2023 Version 1

### What it is

Seven easy-to-use reports that help governors and school leaders to evaluate school performance using the latest 2023 school performance indicators.

### What it tells you

What are the strengths, areas for improvement and under-performing groups of pupils

How does attainment and pupil progress compare to the national average this academic year?

How are you performing in different subjects?

How might the context of your school affect performance?

### About the data shown

1 2 3

#### Actual results

Actual results for your school, using a range of measures such as averages and thresholds.



#### Gauges

These display headline indicators and whether actual results and pupils' progress are in line with, or significantly above or below, the national average.

ESTIMATED



1 2 3

#### Pupil progress

The value added progress that your pupils have made from one key stage to the next. FFT compares your actual results to the estimated results based on the progress of similar pupils nationally.



#### Statistical significance

Green plus signs and red minus signs highlight where either actual results or pupils' progress is significantly above or below the national average.



#### Trends

The dashboard analyses school performance over 3-5 years. Any significant year-on-year improvement is highlighted using an up arrow. Significant declines in performance are highlighted with a down arrow.



#### Strengths & weaknesses

These highlight key pupil groups and subjects where progress is above or below the national average.

### Working in partnership with



### Data sources

Generated from FFT Aspire which includes data sourced from the DfE (National Pupil Database) and data calculated by FFT. FFT is accredited as a DfE supplier to receive early access to ASP data. Headline performance indicators will be consistent with the DfE School Performance Tables and ASP.

# Overview

## KS2 Attainment 2023 · Actual results

57 pupils

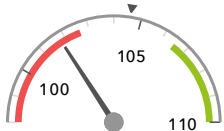
Average Scaled Score (Re, Ma)

% Expected standard+ (Re, Wr, Ma)

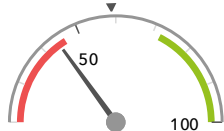
DFE

101.8

44%



Significantly below the national average (104.6)



Significantly below the national average (59%)

## KS2 Progress 2023 · Value Added

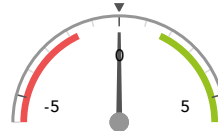
43 matched pupils

Average Scaled Score (Re, Ma)

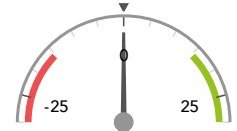
% Expected standard+ (Re, Wr, Ma)

-0.0

+0%



In line with the national average (0)



In line with the national average (0%)

## KS2 higher and lower performing pupil groups 2023

Minimum group size: 5

	Higher performing	Lower performing
<b>Overall achievement</b> pupil progress	Black African (5) SEN Support (9) Unknown (11)	FSM (11) FSM (ever) (11) FSM (in last 6 years) (11)
<b>KS2 reading achievement</b> pupil progress	SEN Support (9) First language not English (19) Unknown (11)	FSM (11) FSM (ever) (11) FSM (in last 6 years) (11)
<b>KS2 writing achievement</b> pupil progress	Black African (5)	FSM (11) FSM (ever) (11) FSM (in last 6 years) (11)
<b>KS2 mathematics achievement</b> pupil progress	Black African (5) Male (15) Unknown (11)	FSM (11) FSM (ever) (11) FSM (in last 6 years) (11)

### Census information

KS2's latest academic year uses the Spring 2023 DfE census – [learn more](#) · [See recent Aspire updates](#)

# Attainment & progress

## KS2 Attainment 2023

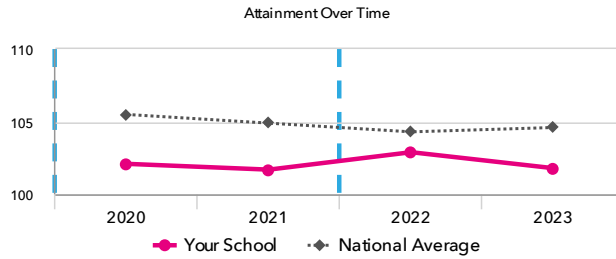
57 pupils

Average Scaled Score (Re, Ma)

101.8 -



Significantly below the national average (104.6)



## KS2 Progress 2023

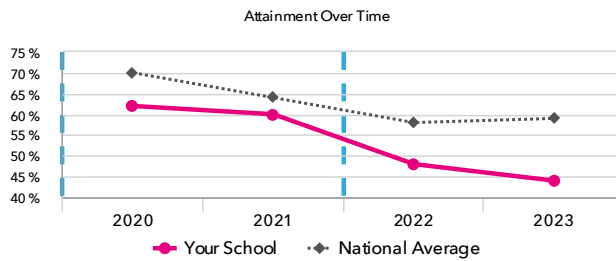
43 matched pupils

Average Scaled Score (Re, Ma)

-0.0



In line with the national average (0)



% Expected standard+ (Re, Wr, Ma)

+0%



In line with the national average (0%)

% Expected standard+ (Re, Wr, Ma) DFE

44% -



Significantly below the national average (59%)

## KS2 performance summary

	Actual results			Pupil progress		
	2021	2022	2023	2021	2022	2023
Number of Pupils / % Matched	53	54	57	79%	87%	75%
% Expected standard+ (Re, Wr, Ma)	60%	48%	44% <span style="color: red;">-</span>	+31% <span style="color: green;">+</span> <span style="color: green;">↑</span>	+2%	+0%
% Higher standard (Re, Wr, Ma)	8%	4%	0% <span style="color: red;">-</span>	+3%	-1%	-6%
Average Scaled Score (Re, GPS, Ma)	103.3 <span style="color: red;">-</span>	103.1	102.0 <span style="color: red;">-</span>	+3.3 <span style="color: green;">+</span> <span style="color: green;">↑</span>	+0.7	+0.4
Average Scaled Score (Re, Ma)	101.7 <span style="color: red;">-</span>	102.9	101.8 <span style="color: red;">-</span>	+3.8 <span style="color: green;">+</span> <span style="color: green;">↑</span>	+0.5	-0.0
% Expected standard+ Reading	70%	76%	70%	+21% <span style="color: green;">+</span> <span style="color: green;">↑</span>	+8%	+4%
% Higher standard Reading	21%	28%	16% <span style="color: red;">-</span>	+8%	+7%	-6%
Scaled Score Reading	101.4 <span style="color: red;">-</span>	103.7	102.8 <span style="color: red;">-</span>	+3.1 <span style="color: green;">+</span> <span style="color: green;">↑</span>	+1.0	+0.8
% Expected standard+ Writing	74%	56% <span style="color: red;">-</span>	49% <span style="color: red;">-</span>	+34% <span style="color: green;">+</span> <span style="color: green;">↑</span>	-2%	-8%
% Higher standard Writing	13%	6%	0% <span style="color: red;">-</span>	+8% <span style="color: green;">+</span>	-4%	-12% <span style="color: red;">-</span>
Scaled Score Writing	103.2	97.6	93.9 <span style="color: red;">-</span> <span style="color: red;">↓</span>	+4.9 <span style="color: green;">+</span> <span style="color: green;">↑</span>	-0.4	-2.9 <span style="color: red;">-</span>
% Expected standard+ Maths	66%	61%	63%	+28% <span style="color: green;">+</span> <span style="color: green;">↑</span>	+0%	-6%
% Higher standard Maths	21%	22%	16%	+14% <span style="color: green;">+</span>	+6%	+4%
Scaled Score Maths	101.9 <span style="color: red;">-</span>	102.2	100.8 <span style="color: red;">-</span>	+4.3 <span style="color: green;">+</span> <span style="color: green;">↑</span>	+0.4	-0.9
% Expected standard+ Grammar, Punctuation & Spelling	53% <span style="color: red;">-</span>	67%	67%	+11%	+3%	+5%
% Higher standard Grammar, Punctuation & Spelling	23%	28%	30%	+17% <span style="color: green;">+</span>	+6%	+13%
Scaled Score Grammar, Punctuation & Spelling	103.0 <span style="color: red;">-</span>	104.3	103.6	+1.4	+1.5	+2.5 <span style="color: green;">+</span>
% Expected standard+ Science	-	78%	74%	-	-	-

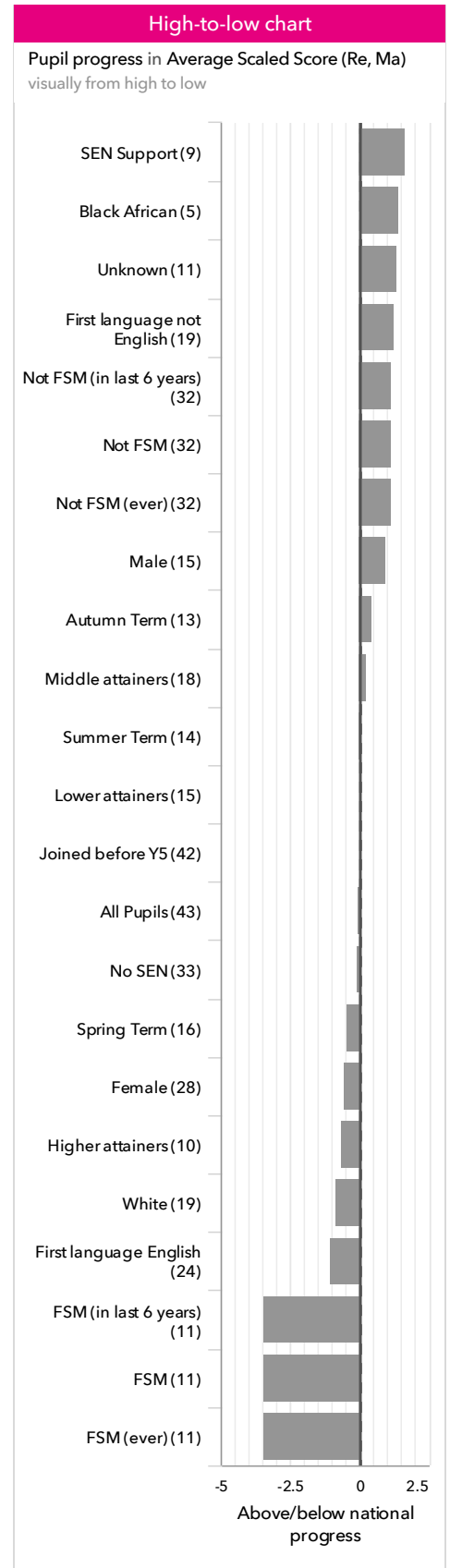
### Census information

KS2's latest academic year uses the Spring 2023 DfE census – [learn more](#) · [See recent Aspire updates](#)

# Pupil groups

## KS2 Pupil groups performance 2023

			Actual results			Pupil progress		
	Pupils		Average Scaled Score (Re, Ma)	% Expected standard+ (Re, Wr, Ma) <small>DFE</small>	% Higher standard (Re, Wr, Ma) <small>DFE</small>	Average Scaled Score (Re, Ma)	% Expected standard+ (Re, Wr, Ma)	% Higher standard (Re, Wr, Ma)
<b>Summary</b>	All Pupils	57	101.8	44%	0%	-0.0	+0%	-6%
<b>Gender</b>	Male	24	100.9	29%	0%	+1.0	+4%	-0%
	Female	33	102.4	55%	0%	-0.6	-2%	-9%
<b>DFE Prior Attainment</b>	Higher attainers	10	109.7	100%	0%	-0.6	+9%	-24%
	Middle attainers	18	103.9	61%	0%	+0.3	+4%	-1%
	Lower attainers	15	94.9	7%	0%	+0.0	-9%	-0%
<b>Pupil Premium</b>	FSM (in last 6 years)	11	96.4	27%	0%	-3.4	-8%	-1%
	Not FSM (in last 6 years)	46	103.1	48%	0%	+1.1	+3%	-8%
<b>FSM</b>	FSM	11	96.4	27%	0%	-3.4	-8%	-1%
	Not FSM	46	103.1	48%	0%	+1.1	+3%	-8%
<b>FSM Ever</b>	FSM (ever)	11	96.4	27%	0%	-3.4	-8%	-1%
	Not FSM (ever)	46	103.1	48%	0%	+1.1	+3%	-8%
<b>Term of Birth</b>	Autumn Term	20	102.7	50%	0%	+0.4	+4%	-8%
	Spring Term	20	101.2	40%	0%	-0.5	-2%	-3%
	Summer Term	17	101.4	41%	0%	+0.0	-1%	-8%
<b>SEN Group</b>	SEN Support	9	98.7	33%	0%	+1.7	-2%	-1%
	EHC Plan	1	84.0	0%	0%	-12.3	-14%	-0%
	No SEN	47	102.7	47%	0%	-0.1	+1%	-8%
<b>EAL</b>	First language not English	31	102.2	39%	0%	+1.2	-2%	-8%
	First language English	26	101.3	50%	0%	-1.0	+2%	-4%
<b>Mobility</b>	Joined in Y5 or Y6	7	100.1	14%	0%	-1.8	-16%	-0%
	Joined before Y5	50	102.0	48%	0%	+0.0	+1%	-6%
<b>Ethnicity</b>	White	23	102.1	48%	0%	-0.8	-4%	-9%
	Black Caribbean	1	106.5	100%	0%	+1.5	+31%	-2%
	Black African	6	102.2	67%	0%	+1.4	+27%	-1%
	Pakistani	2	109.3	50%	0%	+1.4	-22%	-26%
	Other Asian	4	103.5	50%	0%	-2.0	-7%	-3%
	Any Other	3	99.0	33%	0%	-2.4	-14%	-1%
	Unknown	18	100.2	28%	0%	+1.3	+3%	-2%



### Census information

KS2's latest academic year uses the Spring 2023 DfE census – [learn more](#) · [See recent Aspire updates](#)

# Subjects

## KS2 subject performance 2023

	Actual results			Pupil progress			Actual results over time
	2021	2022	2023	2021	2022	2023	
Number of Pupils / % Matched	53	54	57	79%	87%	75%	
<b>Reading</b>							
% Expected standard+	70%	76%	70%	+21% <span style="color: green;">↑</span>	+8%	+4%	<b>% Expected standard+ Reading</b>
% Higher standard	21%	28%	16% <span style="color: red;">↓</span>	+8% <span style="color: green;">↑</span>	+7%	-6%	
Scaled Score	101 <span style="color: red;">↓</span>	104	103 <span style="color: red;">↓</span>	+3.1 <span style="color: green;">↑</span>	+1.0	+0.8	
<b>Writing</b>							
% Expected standard+	74%	56% <span style="color: red;">↓</span>	49% <span style="color: red;">↓</span>	+34% <span style="color: green;">↑</span>	-2%	-8%	<b>% Expected standard+ Writing</b>
% Higher standard	13%	6%	0% <span style="color: red;">↓</span>	+8% <span style="color: green;">↑</span>	-4%	-12% <span style="color: red;">↓</span>	
Scaled Score	103	98	94 <span style="color: red;">↓</span>	+4.9 <span style="color: green;">↑</span>	-0.4	-2.9 <span style="color: red;">↓</span>	
<b>Maths</b>							
% Expected standard+	66%	61%	63%	+28% <span style="color: green;">↑</span>	+0%	-6%	<b>% Expected standard+ Maths</b>
% Higher standard	21%	22%	16%	+14% <span style="color: green;">↑</span>	+6%	+4%	
Scaled Score	102 <span style="color: red;">↓</span>	102	101 <span style="color: red;">↓</span>	+4.3 <span style="color: green;">↑</span>	+0.4	-0.9	
<b>Grammar, Punctuation &amp; Spelling</b>							
% Expected standard+	53% <span style="color: red;">↓</span>	67%	67%	+11%	+3%	+5%	<b>% Expected standard+ Grammar, Punctuation &amp; Spelling</b>
% Higher standard	23%	28%	30%	+17% <span style="color: green;">↑</span>	+6%	+13%	
Scaled Score	103 <span style="color: red;">↓</span>	104	104	+1.4	+1.5	+2.5 <span style="color: green;">↑</span>	
<b>Science</b>							
% Expected standard+	-	78%	74%	-	-	-	<b>% Expected standard+ Science</b>

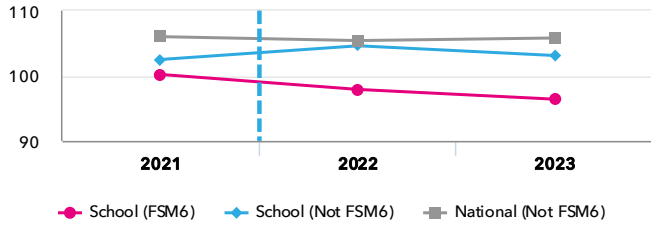
### Census information

KS2's latest academic year uses the Spring 2023 DfE census – [learn more](#) · [See recent Aspire updates](#)

# Disadvantaged pupils

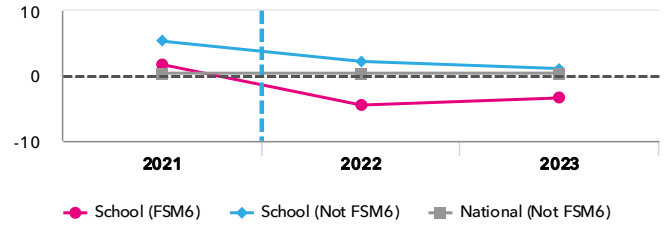
## KS2 attainment for disadvantaged pupils 2023

Average Scaled Score (Re, Ma)

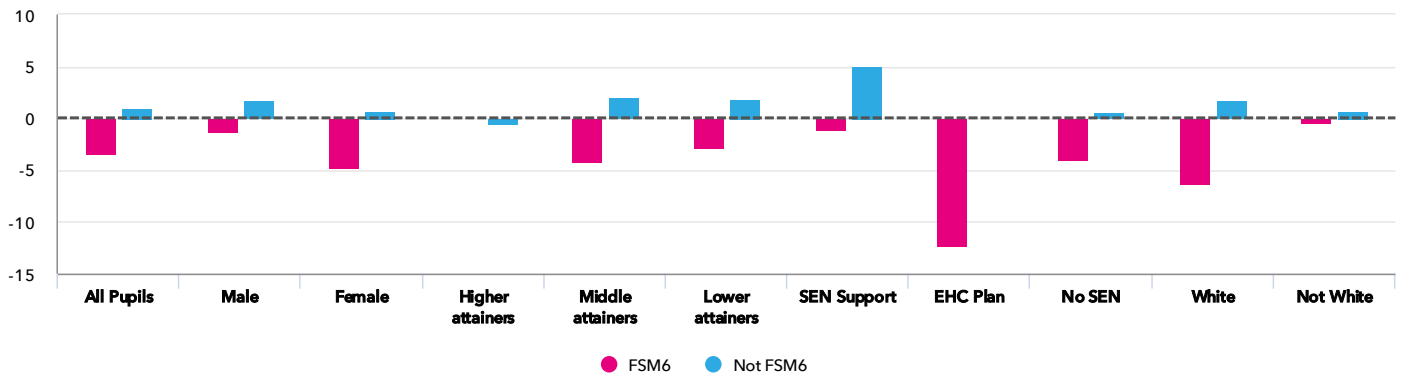


## KS2 progress for disadvantaged pupils 2023

Average Scaled Score (Re, Ma)



## Progress gap Average Scaled Score (Re, Ma)



## Attainment & progress

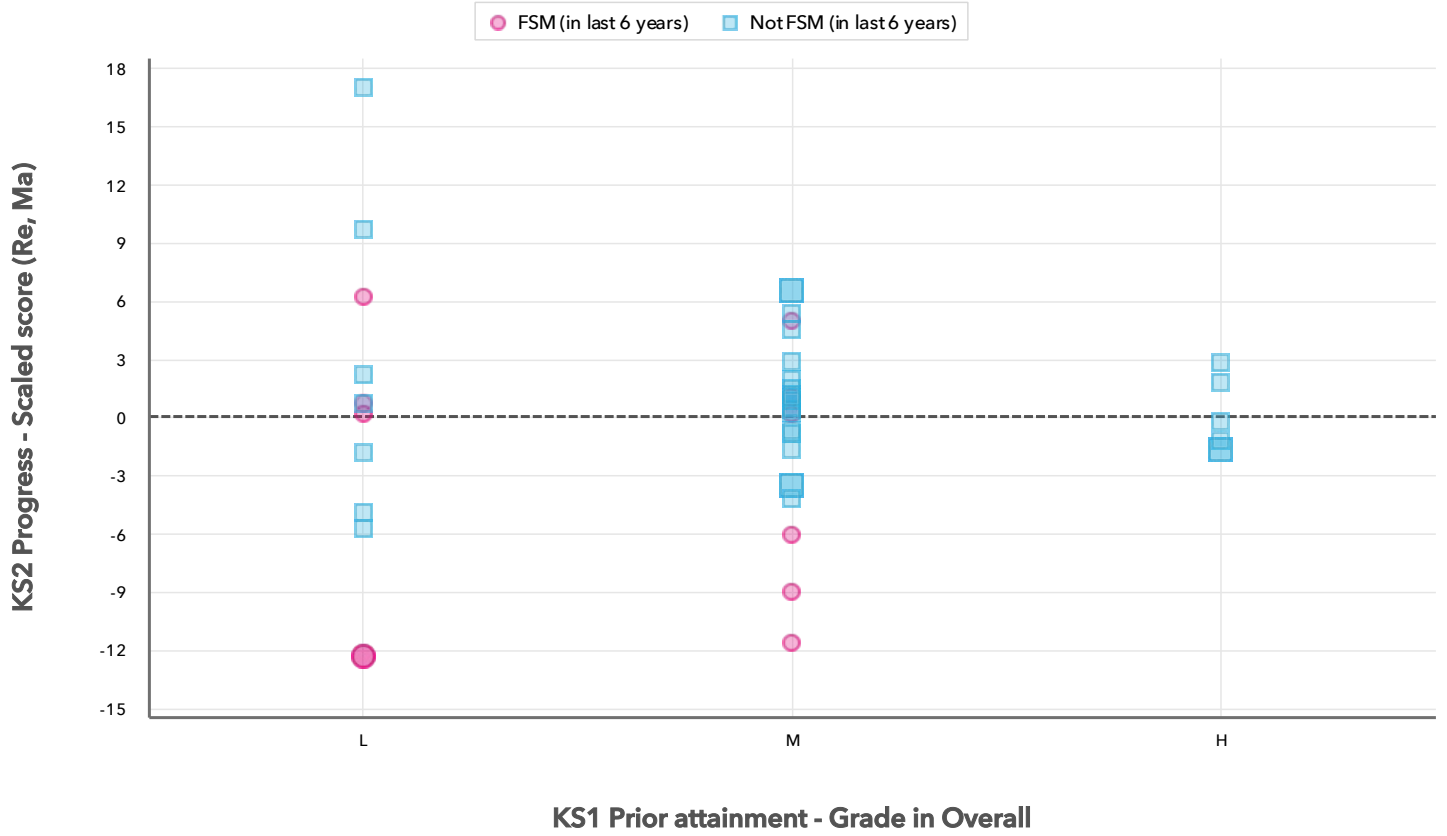
Pupils	FSM6	Not FSM6	Attainment			Progress			
			Average Scaled Score (Re, Ma)			Average Scaled Score (Re, Ma)			
			FSM6	Not FSM6	Gap	FSM6	Not FSM6	Gap	
<b>Summary</b>	All Pupils	11	46	96.4	103.1	-6.7	-3.4	1.1	-4.5
<b>Gender</b>	Male	4	20	97.3	101.7	-4.4	-1.2	1.8	-3
	Female	7	26	95.9	104.2	-8.3	-4.7	0.8	-5.5
<b>DFE Prior Attainment</b>	Higher attainers	-	10	-	109.7	-	-	-0.6	-
	Middle attainers	5	13	99.3	105.7	-6.4	-4.1	2	-6.1
	Lower attainers	6	9	93.9	95.6	-1.7	-2.9	1.9	-4.8
<b>SEN Group</b>	SEN Support	5	4	99.6	97.6	2	-1.1	5.1	-6.2
	EHC Plan	1	-	84	-	-	-12.3	-	-
	No SEN	5	42	95.6	103.6	-8	-4	0.6	-4.6
<b>Ethnic Group</b>	White	6	17	93.3	105.2	-11.9	-6.3	1.7	-8
	Not White	5	29	100	101.8	-1.8	+0.0	0.8	-0.8

### Census information

KS2's latest academic year uses the Spring 2023 DfE census – [learn more](#) · [See recent Aspire updates](#)

# Scatterplot

KS2 Pupil scatterplot 2023 57 pupils highlighted by Pupil Premium



**Census information**

KS2's latest academic year uses the Spring 2023 DfE census – [learn more](#) · [See recent Aspire updates](#)

## Context

## Context · Year 6

		Pupils	Comparative profile 2022 / 2023		Absence during Key Stage 2		Persistent absence during Key Stage 2	
		School	School	National	School	National	School	National
<b>Summary</b>	All Pupils	57	100%	100%	-	-	-	-
<b>Gender</b>	Male	24	42%	51%	-	-	-	-
	Female	33	58%	49%	-	-	-	-
<b>DFE Prior Attainment</b>	Higher attainers	10	18%	29%	-	-	-	-
	Middle attainers	18	32%	45%	-	-	-	-
	Lower attainers	15	26%	21%	-	-	-	-
<b>Pupil Premium</b>	FSM (in last 6 years)	11	19%	30%	-	-	-	-
	Not FSM (in last 6 years)	46	81%	70%	-	-	-	-
<b>FSM</b>	FSM	11	19%	27%	-	-	-	-
	Not FSM	46	81%	72%	-	-	-	-
<b>FSM Ever</b>	FSM (ever)	11	19%	30%	-	-	-	-
	Not FSM (ever)	46	81%	69%	-	-	-	-
<b>Term of Birth</b>	Autumn Term	20	35%	34%	-	-	-	-
	Spring Term	20	35%	33%	-	-	-	-
	Summer Term	17	30%	34%	-	-	-	-
<b>SEN Group</b>	SEN Support	9	16%	16%	-	-	-	-
	EHC Plan	1	2%	5%	-	-	-	-
	No SEN	47	82%	79%	-	-	-	-
<b>EAL</b>	First language not English	31	54%	22%	-	-	-	-
	First language English	26	46%	77%	-	-	-	-
<b>Mobility</b>	Joined in Y5 or Y6	7	12%	8%	-	-	-	-
	Joined before Y5	50	88%	92%	-	-	-	-
<b>Ethnicity</b>	White	23	40%	71%	-	-	-	-
	Black Caribbean	1	2%	3%	-	-	-	-
	Black African	6	11%	6%	-	-	-	-
	Pakistani	2	4%	4%	-	-	-	-
	Other Asian	4	7%	4%	-	-	-	-
	Any Other	3	5%	5%	-	-	-	-
	Unknown	18	32%	1%	-	-	-	-

## Census information

KS2's latest academic year uses the Spring 2023 DfE census – [learn more](#) · [See recent Aspire updates](#)